

# ***FACILITY PROFILE***

22-06-2018 11:56:04 AM  
Minh Tho



**TRUONG THANG GARMENT EXPORT JSC**

# AGENDA



## ABOUT FACILITY

1	GENERAL INFORMATION	3
2	ESTABLISHMENT	4
3	REAL ESTATE	5
4	FACTORY ORGANIZATION	6
5	SEWING COMPOSITION	7
6	PRODUCTION CAPACITY	7
7	STRONG POINT	8
8	MACHINE	9
8	MAIN CUSTOMER	10



## QMS

1	QA ORGANIZATION	11
2	TRAINING PROGRAM	12



## MACHINERY AND EQUIPMENT

# I. ABOUT TRUONG THANG JSC

## 1) GENERAL INFORMATION OF TRUONG THANG JSC



### Location

- In the middle of Vietnam
- No. 208 Lam Son Str, Nong Cong Town, Nong Cong District, Thanh Hoa Province, Vietnam
- From Thanh Hoa City: South West 30km(0.5h)

### How to come here?

1. From Hanoi to Factory (185km): 3 hours by car
2. Flight from Sai Gon to Thanh Hoa: 5 flights/day

### How to contact?

Mr. Vu Cong Thang – General Director

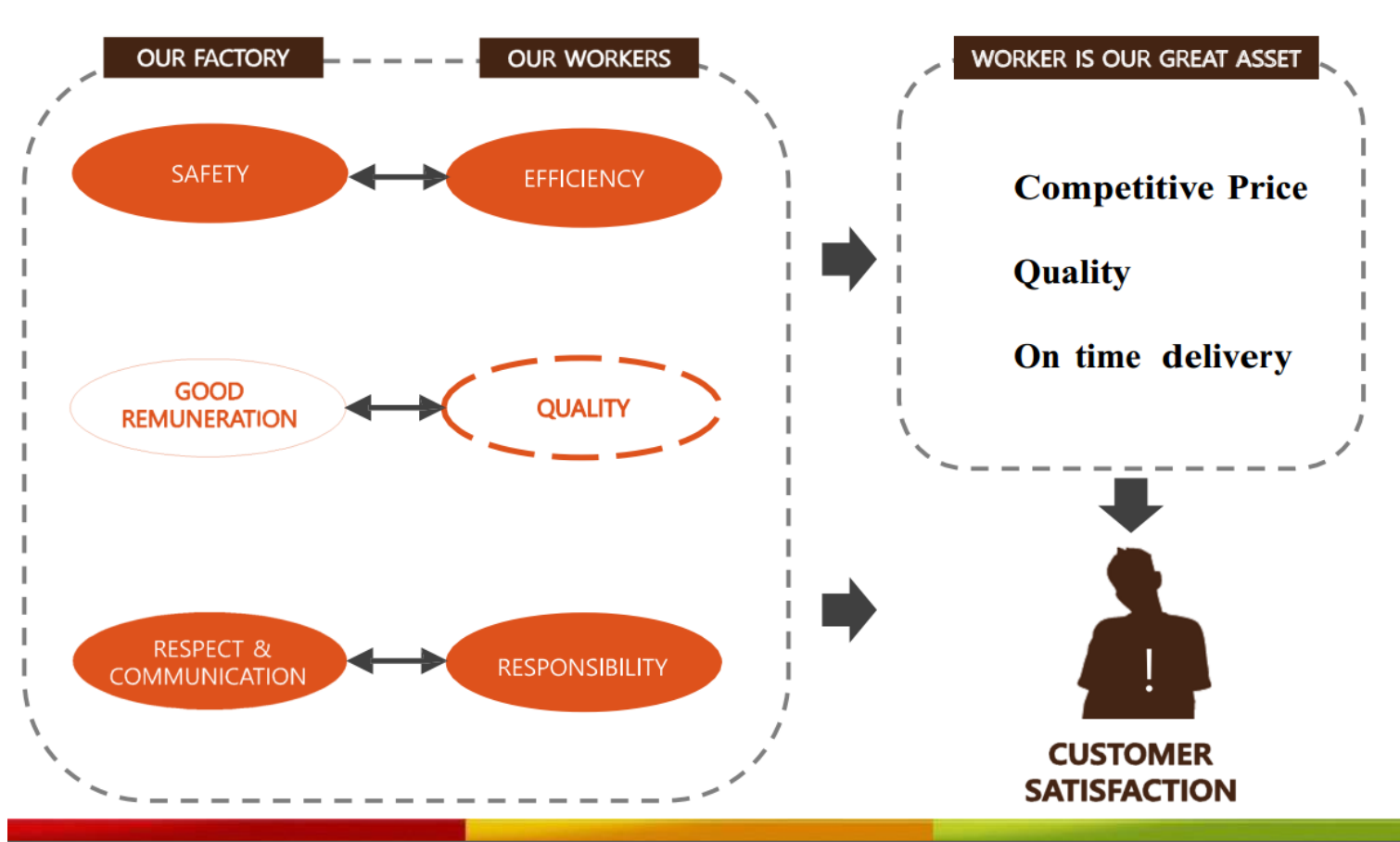
Tel: +84 2373 993 888; Cell phone: +84 913 202 975

Email: [vucongthang72@gmail.com](mailto:vucongthang72@gmail.com)

**TRUONG THANG GARMENT EXPORT JSC**

# PHILOSOPHY

## Worker is our great asset



## 2. ESTABLISHMENT

1)

- Investment license: 2008

2)

- Construction start: 2008

3)

- Construction finish: 2008

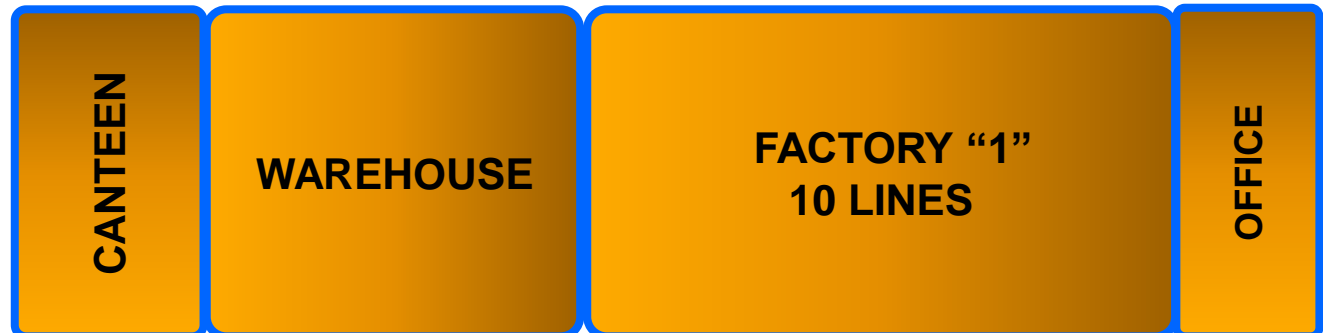
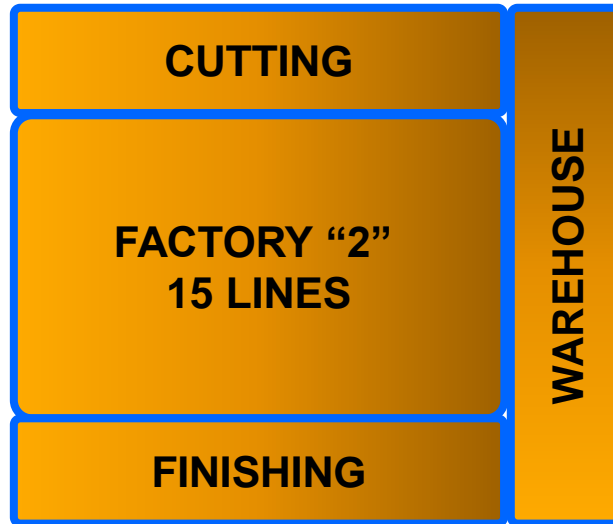
4)

- Factory operate: 26.06.2008

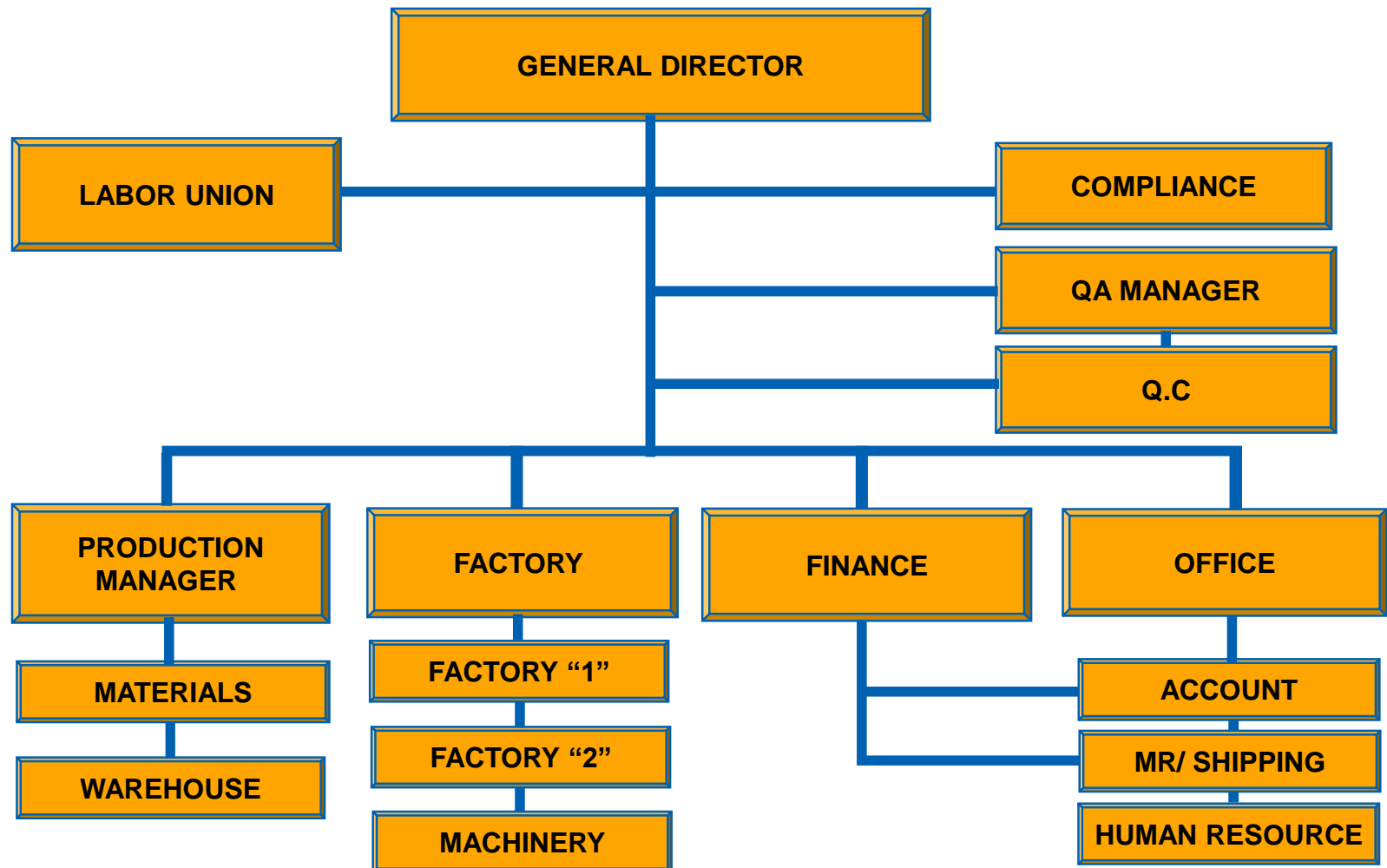
5)

- Real estate:
- Land : 40,099 m2
- Building : 18,473 m2

### 3) REAL ESTATE



## 4) FACTORY ORGANIZATION



## 5) SEWING COMPOSITION

(Unit : Worker)

WorkShop	Line	Worker of Line (Per Line)	Main Item
		Sewer	
1 (Woven)	10	35	Jacket, Pant, Shirt, Short
2 (Knit)	12	30	Pant, Dress, Knits
Total	22	710	

## 6) PRODUCTION CAPACITY

Work Shop	Capacity (Unit : Pcs)		
	Daily	Monthly	Yearly
Workshop 1 (Woven)	5.000	130.000	1.560.000
Workshop 2 (Knit)	15.000	390.000	4.680.000
Total	20.000	520.000	6.240.000

## 7.1) Strong Point

1)

- Plentiful labor forces.
- Lowest labor cost than other area( Minimum salary: vnd 2,920,000)

2)

- Well organized system.

3)

- Safety net is good.

4)

- Installed with automatic machinery

## 7.2) Production Progress

	On-site	Off-site	Physical Address
Cutting	✓		
Sewing	✓		
Washing		✓	Sub-con
Finishing(Pressing, packing, inspection)	✓		
Printing		✓	Sub- con
Embroidery		✓	Sub- con

## 8) Machine

Items	Brand	Q'ty	Remark
Table Cutting machine	Snyter	4	
Mobile Cutting machine	Dayang, Km, Snyter, Anysew	4	
Spreading machine	Satian, Weitejie	4	
CAD,	GERBER Technology	1	Plotter DOT 180
Sewing machine	Juki, Jose	1080	

## 9) MAIN CUSTOMER

### Main Customer

MANGO

Walmart 

**COSTCO**

NAUTICA

 belk

carmel

PRIMARK®

**INDITEX**

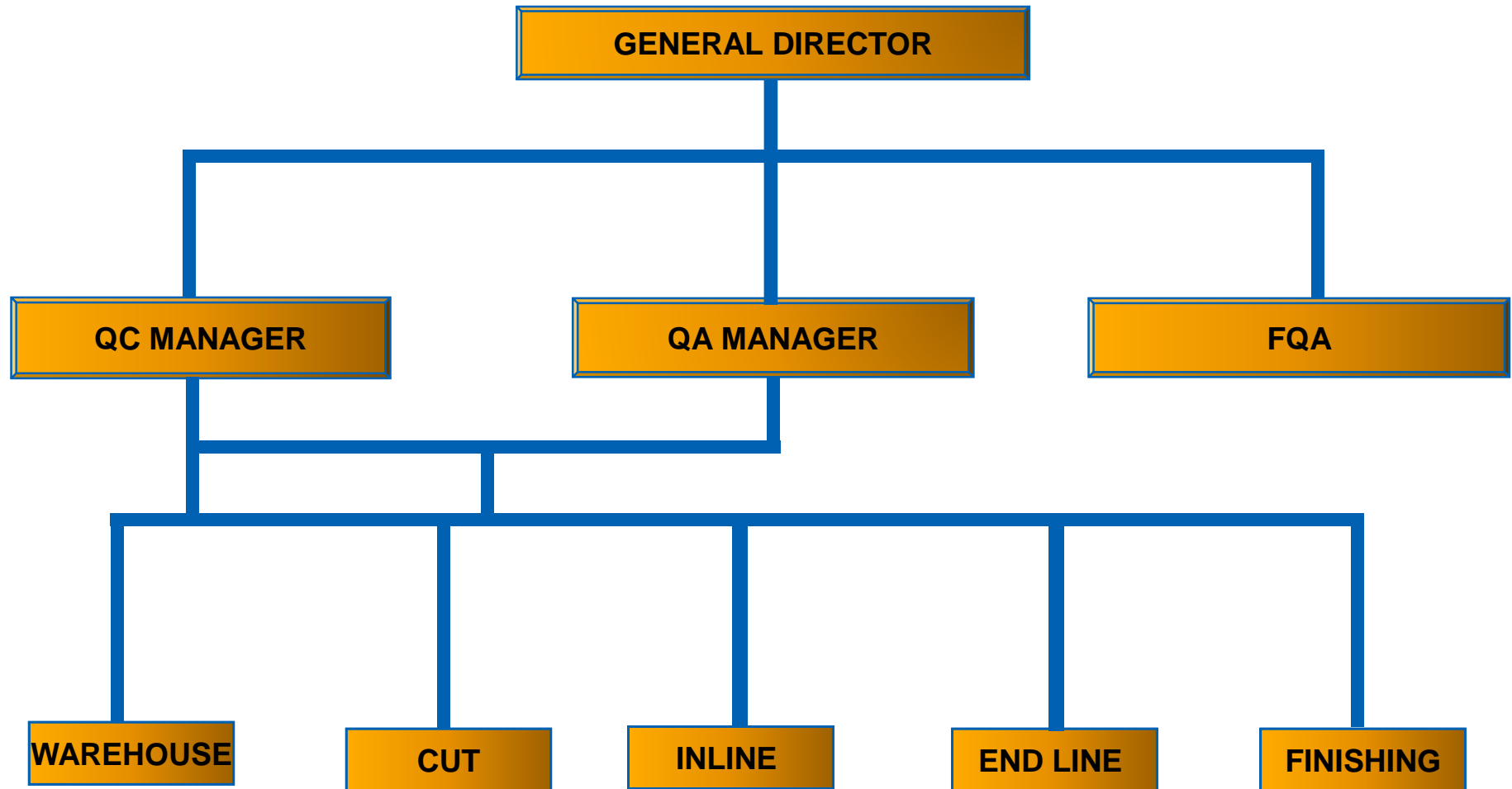
E•LAND

TEENIE WEENIE  
*All That Bear*



## II. QMS

### 1) QA/QC ORGANIZATION



## 2) TRAINING PROGRAM

### 1. QC TRAINING

- QC training  
at 4:30pm ~ 5:30pm  
everyday
- Focusing on SOP
- Managing documents  
and data analysis
- Inspection Method  
When to?  
How to?  
What to?



## 2. Pre - Production Meeting

- **Time:** Before the production

- **Attendee**

FTY Manager, Supervisor,  
Line leader, QA Manager,  
QC Manager, QC chief,  
Mechanic, MR.

- **Subject**

Checking details  
FIT and workmanship

- **Actions plan**

Corrective and preventive  
actions



### 3. First output inspection

- **Time : First ouput**

- **Attendee**

FTY Manager, Supervisor,  
Line leader, QA Manager,  
QC Manager, QC chief,  
Mechanic,MR.

- **Subject**

Checking details  
FIT and workmanship  
Measurement

- **Actions plan**

Corrective and preventive  
actions



# III. MACHINERY AND EQUIPMENT

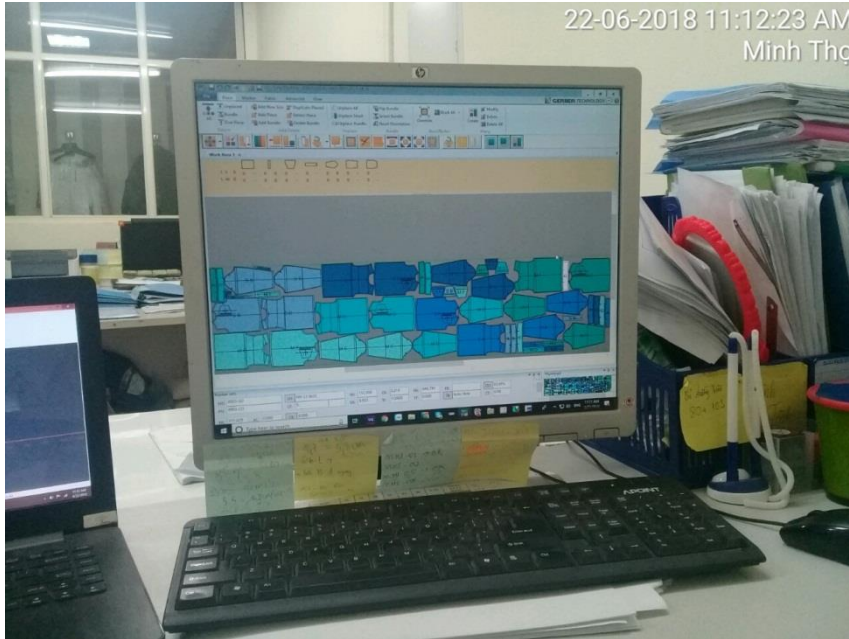
## 1. SPREADING



## 2. IRON



### 3. CAD AND PLOTTER



## 4. Sewing

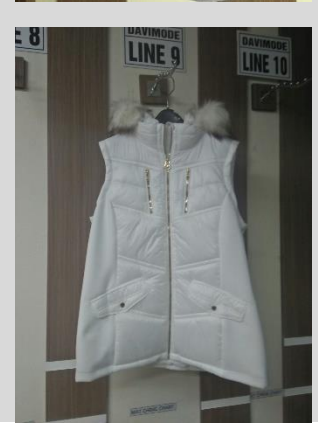


## 5. QC



# TYPICAL PRODUCTS

## Jacket, Outerware



# TYPICAL PRODUCTS



# TYPICAL PRODUCTS



# TYPICAL PRODUCTS

## Trousers, Dress, Pants



# OVERVIEW OF PRODUCTION



# THANK YOU

